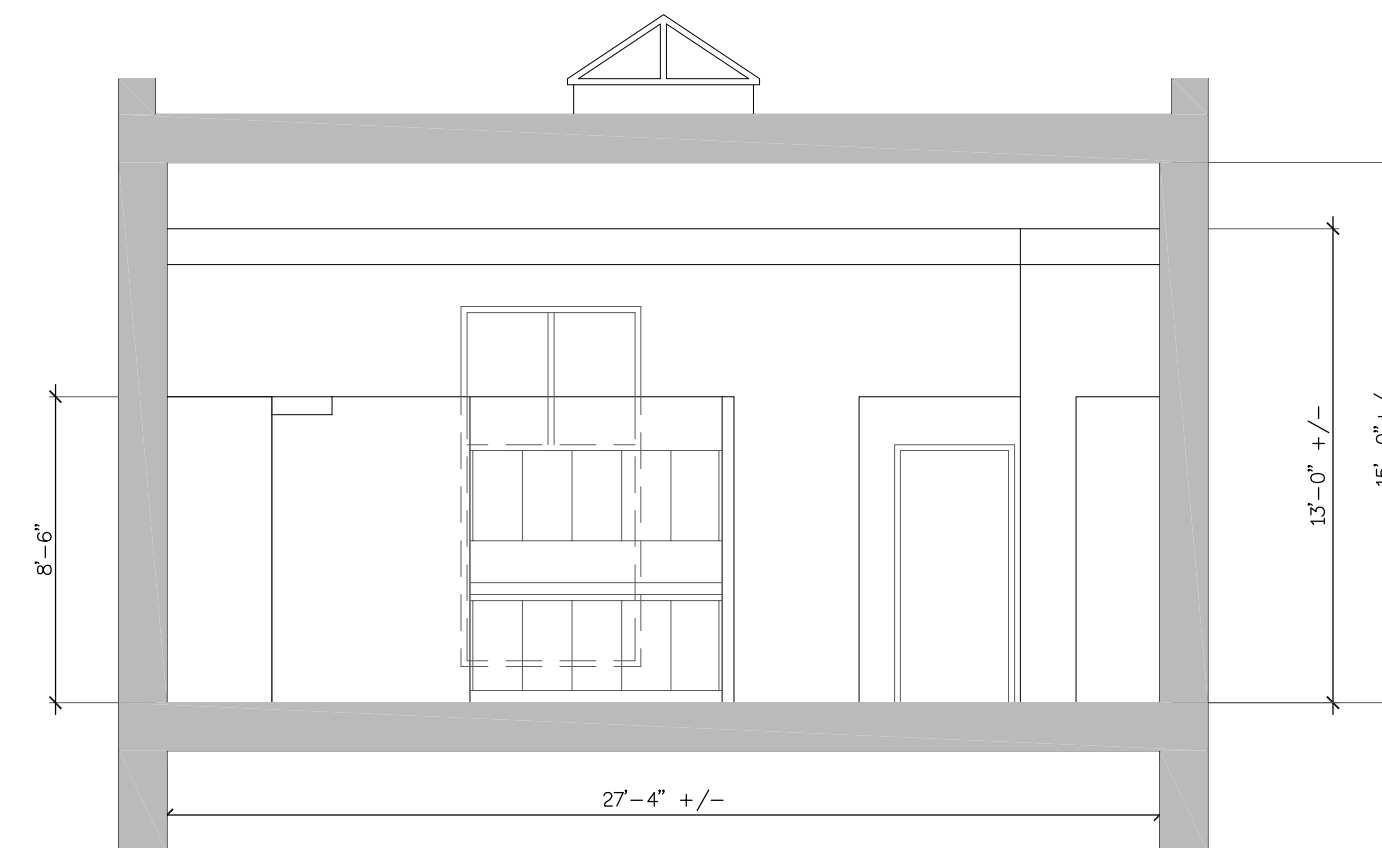


SOUTH ELEVATION

SCALE : 3/16" = 1'-0"



SECTION A-A

SCALE : 3/16" = 1'-0"



NORTH ELEVATION

SCALE : 3/16" = 1'-0"

LONDON CLAY ART CENTRE

master development plan

664 DUNDAS ST. LONDON, ONTARIO

SCALE: 3/16" = 1'-0"

Aug./2009

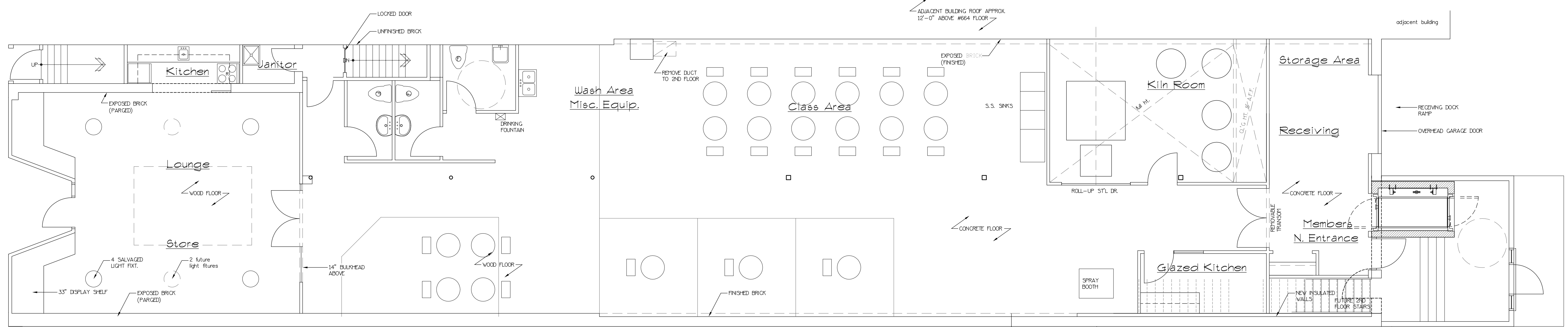
designed by
Eden Hall
 architectural
 design · drafting
 www.edenhall.ca
 341 Talbot Street
 Suite 225
 London, On.
 N6A 2R5
 519-439-6262



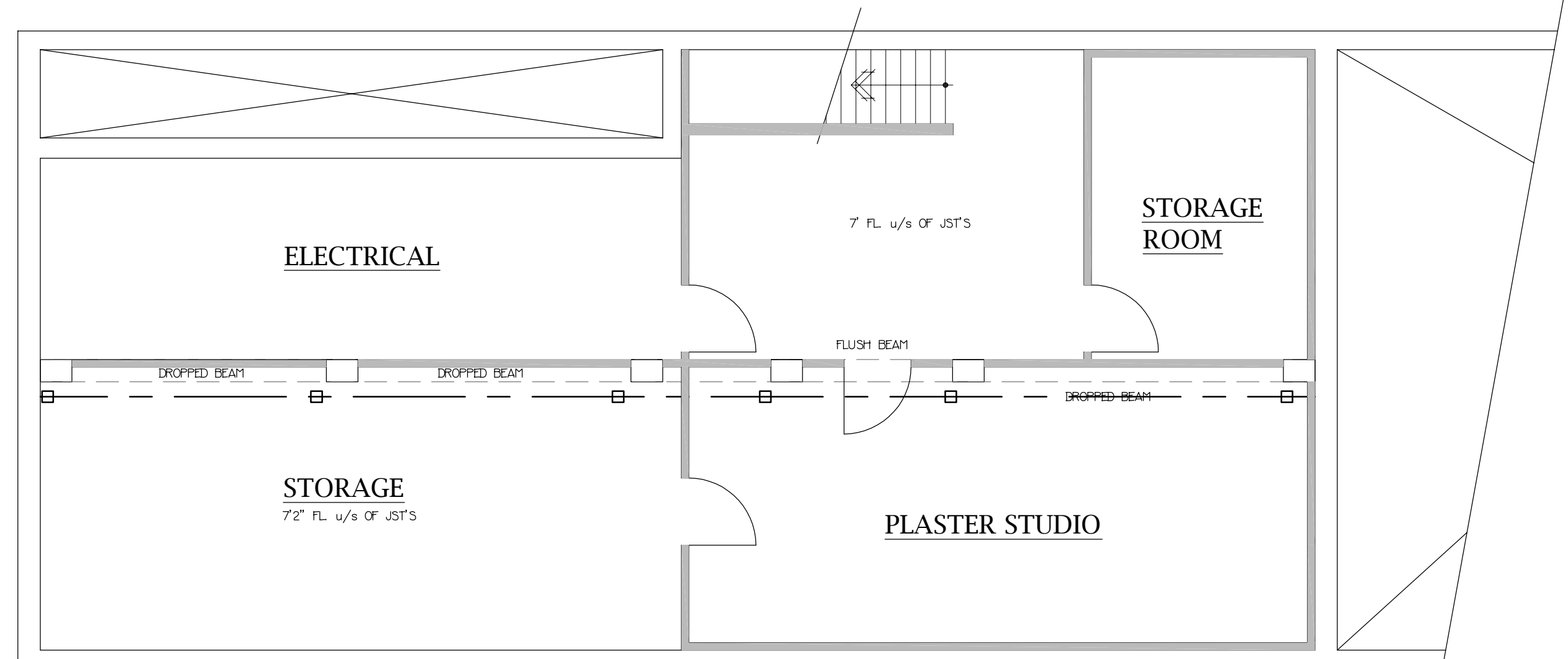
MacFadyen Design and Build (2005) Inc.

149 Oxford Street East, London, Ontario N6A 1T4 • 519-663-9489

Design: Greg Wm. Gillies



FIRST FLOOR PLAN
 PHASE ONE - UNDER CONSTRUCTION



BASEMENT PLAN

LONDON CLAY ART CENTRE

master development plan

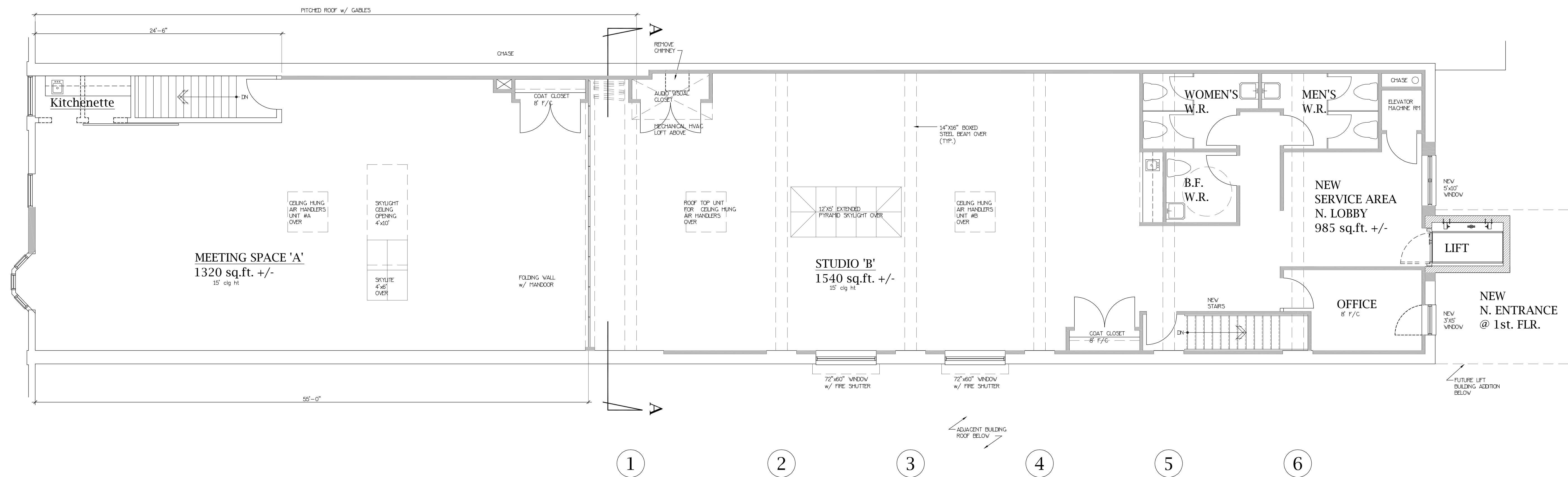
designed by
Eden Hall
 architectural
 design · drafting
 www.edenhall.ca
 341 Talbot Street
 Suite 225
 London, On.
 N6A 2R5
 519-439-6262

664 DUNDAS ST. LONDON, ONTARIO
 SCALE: 3/16" = 1'-0"
 Aug./2009



MacFadyen Design and Build (2005) Inc.
 149 Oxford Street East, London, Ontario N6A 1T4 • 519-663-9489

Design: Greg Wm. Gillies



PRELIMINARY SECOND FLOOR PLAN

3845 sq.ft. +/- EXCLUDING STAIRWELL AREAS

LONDON CLAY ART CENTRE

master development plan

664 DUNDAS ST. LONDON, ONTARIO

SCALE: 3/16" = 1'-0"

Aug./2009



MacFadyen Design and Build (2005) Inc.

149 Oxford Street East, London, Ontario N6A 1T4 • 519-663-9489

Design: Greg Wm. Gillies